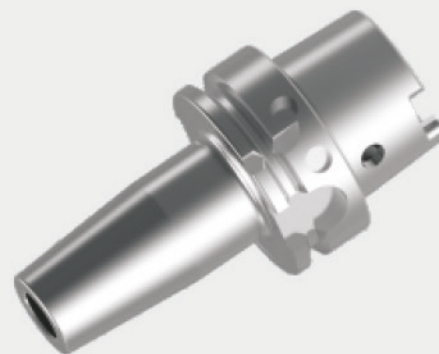


HSK ISO12164 (DIN 69893) TOOL HOLDERS

HYDRAULIC EXPANSIONS CHUCK	7
SHRINK FIT CHUCK	10
ER COLLET CHUCK	12
POWER MILLING CHUCK	13
MICRO-COMPENSATION TAPPING CHUCK	14
SIDE LOCK HOLDER	15
2° SIDE LOCK HOLDER	15
MORSE TAPER HOLDER WITH TANG	16
SHELL END MILL ARBOR	16
FACE MILLING CUTTER HOLDER	17
SLOTING CUTTER HOLDER	17



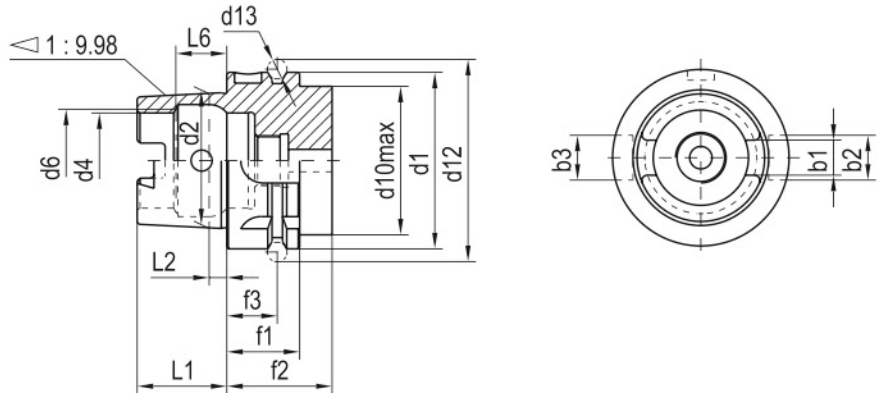
FEATURES:

- Fixed axial positioning due to flat face
- High repetition accuracy while changing tools
- Suitable for high speed cutting
- No pull studs required

Taper hollow shanks with tool gripper groove for automatic tool change

ISO 12164-1(DIN69893-1) form A

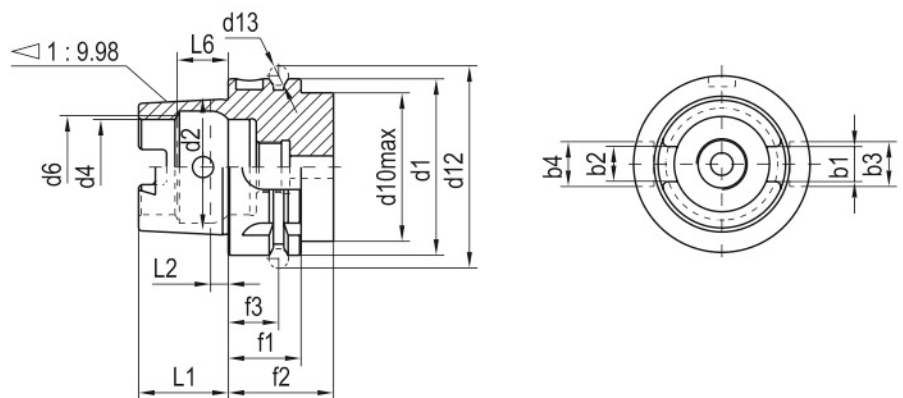
- Used for machining centers, milling machines, special machines with automatic tool change.
- Pipe for central axial coolant feed.
- Torque transmission by 2 driving slots at the end of the taper
- 2 flange grooves for tool magazine, position notch.



Shank	Size(mm)															
	b1	b2	b3	d1	d2	d4	d6	d10	d12	d13	f1	f2	f3	L1	L2	L6
HSK-A32	7.05	7	9	32	24.007	17	19	26	37	4	20	35	16	16	3.2	8.92
HSK-A40	8.05	9	11	40	30.007	21	23	34	45	4	20	35	16	20	4	11.42
HSK-A50	10.54	12	14	50	38.009	26	29	42	59.3	7	26	42	18	25	5	14.13
HSK-A63	12.54	16	18	63	48.010	34	37	53	72.3	7	26	42	18	32	6.3	18.13
HSK-A100	20.02	20	22	100	75.013	53	58	88	109.75	7	29	45	20	50	10	28.56

ISO12164-3 form T

- The standard for the HSK-T (T = Turning) was developed especially for using stationary tools on lathes.
- In comparison with the other HSK variants the driving element play is limited and the effect on the position of the cutting edge minimised.
- In addition it is possible to also mount powered tools on the HSK-T station without modifications to the revolver
- Pipe for central axial coolant feed.
- Torque transmission by 2 driving slots which tolerance is narrowed.
- 2 flange grooves for tool magazine, position notch.

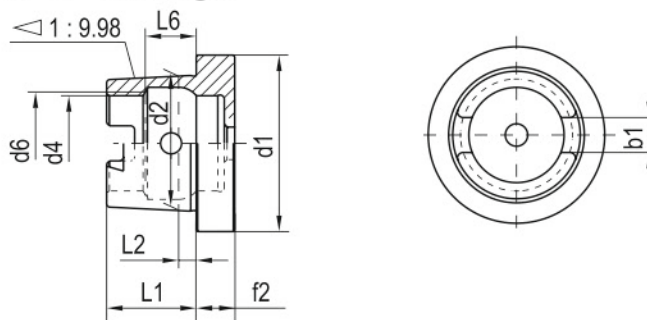


Shank	Size(mm)																
	b1	b2	b3	b4	d1	d2	d4	d6	d10	d12	d13	f1	f2	f3	L1	L2	L6
HSK-T32	7.05	6.932	7	9	32	24.007	17	19	31	37	4	20	23	16	16	3.2	8.92
HSK-T40	8.05	7.932	9	11	40	30.007	21	23	39	45	4	20	23	16	20	4	11.42
HSK-T50	10.54	10.425	12	14	50	38.009	26	29	49	59.3	7	26	30	18	25	5	14.13
HSK-T63	12.54	12.425	16	18	63	48.010	34	37	62	72.3	7	26	30	18	32	6.3	18.13
HSK-T100	20.02	19.091	20	22	100	75.013	53	58	99	109.75	7	29	34	20	50	10	28.56

Taper hollow shanks for manual tool change

ISO 12164-1 (DIN69893-1) form C

- Preferred for use on spindles in transfer lines and special machines without automatic tool change or stub drill spindles and tool extensions / reducers.
- Central axial coolant feed.
- Torque transmission by 2 driving slots at the end of the taper.

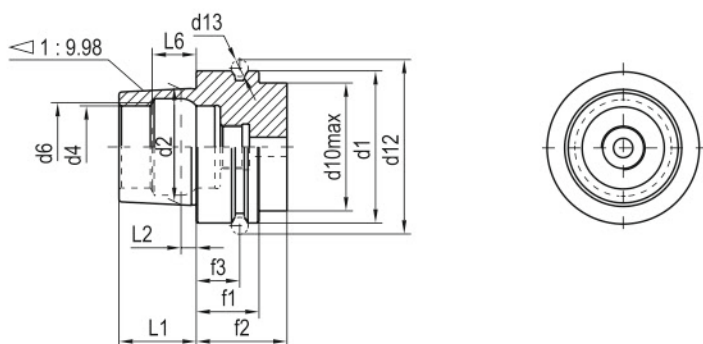


Shank	Size(mm)								
	b1	d1	d2	d4	d6	f2	L1	L2	L6
HSK-C32	7.05	32	24.007	17	19	10	16	3.2	8.92
HSK-C40	8.05	40	30.007	21	23	10	20	4	11.42
HSK-C50	10.54	50	38.009	26	29	12.5	25	5	14.13
HSK-C63	12.54	63	48.010	34	37	12.5	32	6.3	18.13
HSK-C100	20.02	100	75.013	53	58	16	50	10	28.56

Taper hollow shanks with tool gripper groove for high speed cutting

DIN69893-5 form E

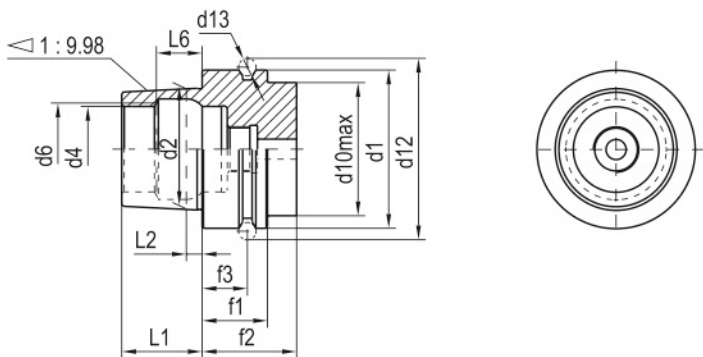
- Used for high frequency spindles, woodworking machines.
- Rotationally symmetrical, without any driving slot.
- Torque transmission by friction
- Pipe for central axial coolant feed.



Shank	Size(mm)												
	d1	d2	d4	d6	d10	d12	d13	f1	f2	f3	L1	L2	L6
HSK-E32	32	24.007	17	19	26	37	4	20	35	16	16	3.2	8.92
HSK-E40	40	30.007	21	23	34	45	4	20	35	16	20	4	11.42
HSK-E50	50	38.009	26	29	42	59.3	7	26	42	18	25	5	14.13
HSK-E63	63	48.010	34	37	53	72.3	7	26	42	18	32	6.3	18.13

DIN69893-6 form F

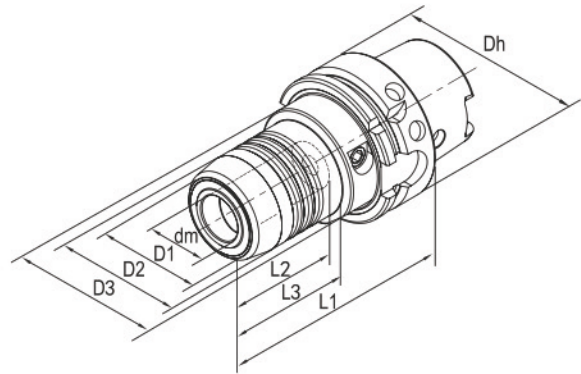
- with enlarged collar.
- Central coolant feed facility.



Shank	Size(mm)												
	d1	d2	d4	d6	d10	d12	d13	f1	f2	f3	L1	L2	L6
HSK-F50	50	30.007	21	23	42	59.3	7	26	42	18	20	4	11.42
HSK-F63	63	38.009	26	29	53	72.3	7	26	42	18	25	5	14.13
HSK-F80	80	48.010	34	37	67	88.8	7	26	42	18	32	6.3	18.13

HYDRAULIC EXPANSIONS CHUCK

- Super transmitted torque for high clamping reliability.
- Radial run-out less than 3 μ (system accuracy at 4xd)
- For clamping cutting tools with cylindric shank tolerance h6
- Flexible clamping range due to use of reducing sleeve for Various shank.
- Axial length adjustment available and max. adjustment travel 10mm.
- Ideal damping characteristics, resulting in optimum surface finish, increase cutter life time and spindle protection.
- Reducing sleeve, Coolant pipe and coolant pipe Wrench optional.



Order No.	Mode	Shank	Size(mm)									Screw type	Screw Wrench	for Collets
			Dh	dm	D1	D2	D3	L1	L2	L3				
111-01-401	HSK63A-HCM06-70	HSK-A63	63	6	22	26	50	70	37	24	HCS005014C	TS5	-	
111-01-402	HSK63A-HCM08-70	HSK-A63	63	8	24	28	50	70	37	25	HCS006014C	TS5	-	
111-01-403	HSK63A-HCM10-80	HSK-A63	63	10	26	30	50	80	41	35	HCS008014C	TS5	-	
111-01-404	HSK63A-HCM12-85	HSK-A63	63	12	28	32	50	85	46	40	HCS008014C	TS5	HC12	
111-01-405	HSK63A-HCM16-90	HSK-A63	63	16	34	38	50	90	49	46	HCS008014C	TS5	-	
111-01-406	HSK63A-HCM20-90	HSK-A63	63	20	38	42	50	90	51	48	HCS008014C	TS5	HC20	
111-01-407	HSK63A-HCM25-120	HSK-A63	63	25	53	57	63	120	57	59	HCS012014C	TS6	-	
111-01-408	HSK63A-HCM32-125	HSK-A63	63	32	60	64	75	125	61	63	HCS012014C	TS6	HC32	
111-01-409	HSK63A-HCM14-85	HSK-A63	63	14	30	34	50	85	46	40	HCS008014C	TS5	-	
111-01-410	HSK63A-HCM18-90	HSK-A63	63	18	36	40	50	90	49	47	HCS008014C	TS5	-	
111-01-411	HSK63A-HCM06-150	HSK-A63	63	6	22	26	50	150	37	103	HCS005014C	TS5	-	
111-01-412	HSK63A-HCM08-150	HSK-A63	63	8	24	28	50	150	37	104	HCS006014C	TS5	-	
111-01-413	HSK63A-HCM10-150	HSK-A63	63	10	26	30	50	150	41	104	HCS008014C	TS5	-	
111-01-414	HSK63A-HCM12-150	HSK-A63	63	12	28	32	50	150	46	105	HCS008014C	TS5	HC12	
111-01-415	HSK63A-HCM14-150	HSK-A63	63	14	30	34	50	150	46	105	HCS008014C	TS5	-	
111-01-416	HSK63A-HCM16-150	HSK-A63	63	16	34	38	50	150	49	106	HCS008014C	TS5	-	
111-01-417	HSK63A-HCM18-150	HSK-A63	63	18	36	40	50	150	49	107	HCS008014C	TS5	-	
111-01-418	HSK63A-HCM20-150	HSK-A63	63	20	38	42	50	150	51	108	HCS008014C	TS5	HC20	
111-01-419	HSK63A-HCM06-200	HSK-A63	63	6	22	26	50	200	37	153	HCS005014C	TS5	-	
111-01-420	HSK63A-HCM08-200	HSK-A63	63	8	24	28	50	200	37	154	HCS006014C	TS5	-	
111-01-421	HSK63A-HCM10-200	HSK-A63	63	10	26	30	50	200	41	154	HCS008014C	TS5	-	
111-01-422	HSK63A-HCM12-200	HSK-A63	63	12	28	32	50	200	46	155	HCS008014C	TS5	HC12	
111-01-423	HSK63A-HCM14-200	HSK-A63	63	14	30	34	50	200	46	155	HCS008014C	TS5	-	
111-01-424	HSK63A-HCM16-200	HSK-A63	63	16	34	38	50	200	49	156	HCS008014C	TS5	-	
111-01-425	HSK63A-HCM18-200	HSK-A63	63	18	36	40	50	200	49	157	HCS008014C	TS5	-	
111-01-426	HSK63A-HCM20-200	HSK-A63	63	20	38	42	50	200	51	158	HCS008014C	TS5	HC20	
111-01-601	HSK100A-HCM06-75	HSK-A100	100	6	22	26	50	75	37	26	HCS005014C	TS5	-	
111-01-602	HSK100A-HCM08-75	HSK-A100	100	8	24	28	50	75	37	26	HCS006014C	TS5	-	
111-01-603	HSK100A-HCM10-90	HSK-A100	100	10	26	30	50	90	41	42	HCS008014C	TS5	-	
111-01-604	HSK100A-HCM12-95	HSK-A100	100	12	28	32	50	95	46	47	HCS008014C	TS5	HC12	
111-01-605	HSK100A-HCM16-100	HSK-A100	100	16	34	38	50	100	49	53	HCS008014C	TS5	-	
111-01-606	HSK100A-HCM20-105	HSK-A100	100	20	38	42	50	105	51	51	HCS008014C	TS5	HC20	
111-01-607	HSK100A-HCM25-110	HSK-A100	100	25	53	57	63	110	57	62	HCS012014C	TS6	-	
111-01-608	HSK100A-HCM32-110	HSK-A100	100	32	60	64	75	110	61	62	HCS012014C	TS6	HC32	
111-01-609	HSK100A-HCM12-150	HSK-A100	100	12	28	32	50	150	46	102	HCS008014C	TS5	HC12	
111-01-610	HSK100A-HCM20-150	HSK-A100	100	20	38	42	50	150	51	104	HCS008014C	TS5	HC20	

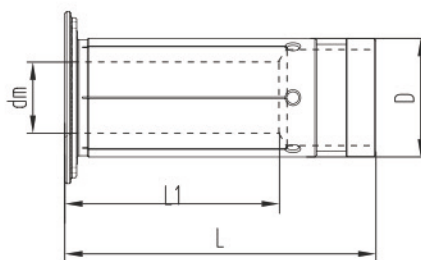
Optional accessories:

	Dh=63	Dh=100
Coolant tubes		
Model	TU-HSK63	TU-HSK100
Order No.	100-00-001	100-00-002

	Dh=63	Dh=100
Coolant tube Wrench		
Model	W-HSK63	W-HSK100
Order No.	100-00-003	100-00-004

REDUCING SLEEVE FOR HYDRAULIC EXPANSIONS CHUCK

- Radial run-out less than 5 μ .
- For clamping cutting tools with cylindric shank tolerance h6.



Order No.	Model	Size (mm)			
		dm	D	L1	L
100-01-001	HC12-3	3	12	16.5	47.5
100-01-002	HC12-4	4	12	16.5	47.5
100-01-003	HC12-5	5	12	16.5	47.5
100-01-004	HC12-6	6	12	24	47.5
100-01-005	HC12-8	8	12	25.5	47.5
100-01-006	HC20-3	3	20	17.5	52.5
100-01-007	HC20-4	4	20	17.5	52.5
100-01-008	HC20-5	5	20	17.5	52.5
100-01-009	HC20-6	6	20	25.5	52.5
100-01-010	HC20-7	7	20	28	52.5
100-01-011	HC20-8	8	20	28	52.5
100-01-012	HC20-9	9	20	32.5	52.5
100-01-013	HC20-10	10	20	32.5	52.5
100-01-014	HC20-11	11	20	36	52.5
100-01-015	HC20-12	12	20	36	52.5
100-01-016	HC20-13	13	20	36.5	52.5
100-01-017	HC20-14	14	20	37	52.5
100-01-018	HC20-15	15	20	37	52.5
100-01-019	HC20-16	16	20	37.5	52.5
100-01-020	HC32-6	6	32	25.5	63.5
100-01-021	HC32-8	8	32	27.5	63.5
100-01-022	HC32-10	10	32	30.5	63.5
100-01-023	HC32-12	12	32	30.5	63.5
100-01-024	HC32-14	14	32	32.5	63.5
100-01-025	HC32-16	16	32	40.5	63.5
100-01-026	HC32-18	18	32	40.5	63.5
100-01-027	HC32-20	20	32	40.5	63.5
100-01-028	HC32-25	25	32	48.5	63.5

HYDRAULIC EXPANSIONS CHUCK SET

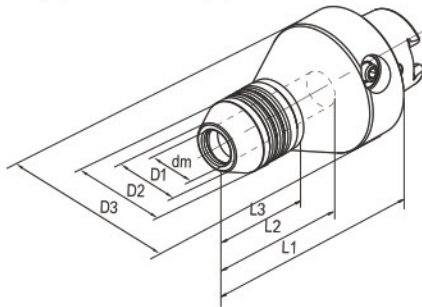
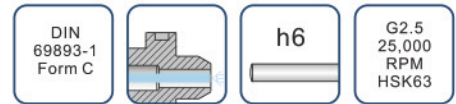
- Each set including 1pc each of HSK63A-HCM20-90 hydraulic expansion chuck, HC20-6, HC20-8, HC20-10, HC20-12, HC20-16 (internal dia: 6, 8, 10, 12, 16mm) reducing sleeves and screw wrench.
- pack in strong aluminium box.



ORDER NO.111-01-S04

PRECISION HYDRAULIC EXPANSIONS CHUCK

- Used on CNC tool grinding machine for grinding/sharpening of drill, reamer, end mill etc.
- High precision and Radial Run-out not more than 2μ at 4d checking point.
- Super transmitted torque for high clamping reliability.
- For clamping cylindrical shank tolerance h6
- Can be operated frequently long time and keep good repeatability.
- Coolant pipe and coolant pipe Wrench optional.



Order No.	Mode	Shank	Size(mm)							Wrench	for Collets
			dm	D1	D2	D3	L1	L2	L3		
111-01-001	HSK63C-HCM12-110M	HSK-C63	12	21.5	36.5	75	110	83	47	TS5	HC12..M
111-01-002	HSK63C-HCM20-110M	HSK-C63	20	28	42	75	110	83	47	TS5	HC20..M
111-01-003	HSK63C-HCM32-110M	HSK-C63	32	40	54	80	110	83	62.5	TS5	HC32..M

Optional accessories:

Coolant tubes	Dh=63	Dh=100
Model	TU-HSK63	TU-HSK100
Order No.	100-00-001	100-00-002

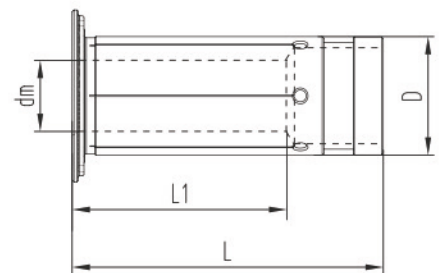
Coolant tube Wrench	Dh=63	Dh=100
Model	W-HSK63	W-HSK100
Order No.	100-00-003	100-00-004

PRECISION REDUCING SLEEVE FOR HYDRAULIC CHUCK

- Radial run-out less than 3μ .
- Used for grinding/sharpening of drill, reamer, end mill etc.
- For clamping cutting tools with cylindrical shank tolerance h6



Order No.	Mode	Size (mm)			
		dm	D	L1	L
100-01-101	HC12-3M	3	12	16.5	47.5
100-01-102	HC12-4M	4	12	16.5	47.5
100-01-103	HC12-5M	5	12	16.5	47.5
100-01-104	HC12-6M	6	12	24	47.5
100-01-105	HC12-8M	8	12	25.5	47.5
100-01-106	HC20-3M	3	20	17.5	52.5
100-01-107	HC20-4M	4	20	17.5	52.5
100-01-108	HC20-5M	5	20	17.5	52.5
100-01-109	HC20-6M	6	20	25.5	52.5
100-01-110	HC20-7M	7	20	28	52.5
100-01-111	HC20-8M	8	20	28	52.5
100-01-112	HC20-9M	9	20	32.5	52.5
100-01-113	HC20-10M	10	20	32.5	52.5
100-01-114	HC20-11M	11	20	36	52.5
100-01-115	HC20-12M	12	20	36	52.5
100-01-116	HC20-13M	13	20	36.5	52.5
100-01-117	HC20-14M	14	20	37	52.5
100-01-118	HC20-15M	15	20	37	52.5
100-01-119	HC20-16M	16	20	37.5	52.5
100-01-120	HC32-6M	6	32	25.5	63.5
100-01-121	HC32-8M	8	32	27.5	63.5
100-01-122	HC32-10M	10	32	30.5	63.5
100-01-123	HC32-12M	12	32	30.5	63.5
100-01-124	HC32-14M	14	32	32.5	63.5
100-01-125	HC32-16M	16	32	40.5	63.5
100-01-126	HC32-18M	18	32	40.5	63.5
100-01-127	HC32-20M	20	32	40.5	63.5
100-01-128	HC32-25M	25	32	48.5	63.5



SHRINK FIT CHUCK

- Made of high-temperature steel and fit for High frequency heating machine.
- For clamping cutting tools with cylinderic shank tolerance h6
- High tool-gripping strength and machining accuracy
- 360 degree concentric clamping without set screws, collets.
- Engineered to produce the high degree of balance available
- With indicating line for shank depth of cutter.
- Coolant pipe and coolant pipe Wrench optional.

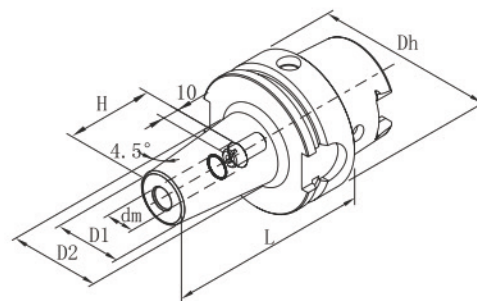


Order No.	Model	Shank	Size(mm)						Screw
			Dh	dm	D1	D2	L	H	
111-02-401	HSK63A-SFX03-80	HSK-A63	63	3	10	-	80	10	-
111-02-402	HSK63A-SFX04-80	HSK-A63	63	4	10	-	80	12	-
111-02-403	HSK63A-SFX05-80	HSK-A63	63	5	10	-	80	15	-
111-02-404	HSK63A-SFX06-80	HSK-A63	63	6	21	27	80	36	S005014C
111-02-405	HSK63A-SFX06-120	HSK-A63	63	6	21	27	120	36	S005014C
111-02-406	HSK63A-SFX06-160	HSK-A63	63	6	21	32	160	36	S005014C
111-02-407	HSK63A-SF08-80	HSK-A63	63	8	21	27	80	36	S006014C
111-02-408	HSK63A-SF08-120	HSK-A63	63	8	21	27	120	36	S006014C
111-02-409	HSK63A-SF08-160	HSK-A63	63	8	21	32	160	36	S006014C
111-02-410	HSK63A-SF10-85	HSK-A63	63	10	24	32	85	42	S008014C
111-02-411	HSK63A-SF10-120	HSK-A63	63	10	24	32	120	42	S008014C
111-02-412	HSK63A-SF10-160	HSK-A63	63	10	24	34	160	42	S008014C
111-02-413	HSK63A-SF12-90	HSK-A63	63	12	24	32	90	47	S008014C
111-02-414	HSK63A-SF12-120	HSK-A63	63	12	24	32	120	47	S008014C
111-02-415	HSK63A-SF12-160	HSK-A63	63	12	24	34	160	47	S008014C
111-02-416	HSK63A-SF14-90	HSK-A63	63	14	27	34	90	47	S008014C
111-02-417	HSK63A-SF14-120	HSK-A63	63	14	27	34	120	47	S008014C
111-02-418	HSK63A-SF14-160	HSK-A63	63	14	27	42	160	47	S008014C
111-02-419	HSK63A-SF16-95	HSK-A63	63	16	27	34	95	50	S012014C
111-02-420	HSK63A-SF16-120	HSK-A63	63	16	27	34	120	50	S012014C
111-02-421	HSK63A-SF16-160	HSK-A63	63	16	27	42	160	50	S012014C
111-02-422	HSK63A-SF18-95	HSK-A63	63	18	33	42	95	50	S012014C
111-02-423	HSK63A-SF18-120	HSK-A63	63	18	33	42	120	50	S012014C
111-02-424	HSK63A-SF18-160	HSK-A63	63	18	33	51	160	50	S012014C
111-02-425	HSK63A-SF20-100	HSK-A63	63	20	33	42	100	52	S016016C
111-02-426	HSK63A-SF20-120	HSK-A63	63	20	33	42	120	52	S016016C
111-02-427	HSK63A-SF20-160	HSK-A63	63	20	33	51	160	52	S016016C
111-02-428	HSK63A-SF25-115	HSK-A63	63	25	44	53	115	58	S016016C
111-02-429	HSK63A-SF25-160	HSK-A63	63	25	44	60	160	58	S016016C
111-02-601	HSK100A-SFX06-85	HSK-A100	100	6	21	27	85	36	S005014C
111-02-602	HSK100A-SFX06-120	HSK-A100	100	6	21	27	120	36	S005014C
111-02-603	HSK100A-SFX06-160	HSK-A100	100	6	21	32	160	36	S005014C
111-02-604	HSK100A-SF08-85	HSK-A100	100	8	21	27	85	36	S006014C
111-02-605	HSK100A-SF08-120	HSK-A100	100	8	21	27	120	36	S006014C
111-02-606	HSK100A-SF-160	HSK-A100	100	8	21	32	160	36	S006014C
111-02-607	HSK100A-SF10-90	HSK-A100	100	10	24	32	90	42	S008014C
111-02-608	HSK100A-SF10-120	HSK-A100	100	10	24	32	120	42	S008014C
111-02-609	HSK100A-SF10-160	HSK-A100	100	10	24	34	160	42	S008014C
111-02-610	HSK100A-SF12-95	HSK-A100	100	12	24	32	95	47	S008014C
111-02-611	HSK100A-SF12-120	HSK-A100	100	12	24	32	120	47	S008014C
111-02-612	HSK100A-SF12-160	HSK-A100	100	12	24	34	160	47	S008014C
111-02-613	HSK100A-SF14-95	HSK-A100	100	14	27	34	95	47	S008014C
111-02-614	HSK100A-SF14-120	HSK-A100	100	14	27	34	120	47	S008014C
111-02-615	HSK100A-SF14-160	HSK-A100	100	14	27	42	160	47	S008014C
111-02-616	HSK100A-SF16-100	HSK-A100	100	16	27	34	100	50	S012014C
111-02-617	HSK100A-SF16-120	HSK-A100	100	16	27	34	120	50	S012014C
111-02-618	HSK100A-SF16-160	HSK-A100	100	16	27	42	160	50	S012014C
111-02-619	HSK100A-SF18-100	HSK-A100	100	18	33	42	100	50	S012014C
111-02-620	HSK100A-SF18-120	HSK-A100	100	18	33	42	120	50	S012014C
111-02-621	HSK100A-SF18-160	HSK-A100	100	18	33	51	160	50	S012014C
111-02-622	HSK100A-SF20-105	HSK-A100	100	20	33	42	105	52	S016016C
111-02-623	HSK100A-SF20-120	HSK-A100	100	20	33	42	120	52	S016016C
111-02-624	HSK100A-SF20-160	HSK-A100	100	20	33	51	160	52	S016016C
111-02-625	HSK100A-SF25-115	HSK-A100	100	25	44	53	115	58	S016016C
111-02-626	HSK100A-SF25-160	HSK-A100	100	25	44	60	160	58	S016016C
111-02-627	HSK100A-SF32-120	HSK-A100	100	32	44	53	120	58	S016016C
111-02-628	HSK100A-SF32-160	HSK-A100	100	32	44	60	160	58	S016016C

Optional accessories:

	Coolant tubes	Dh=63	Dh=100
Model		TU-HSK63	TU-HSK100
Order No.		100-00-001	100-00-002

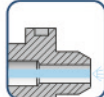
	Coolant tube Wrench	Dh=63	Dh=100
Model		W-HSK63	W-HSK100
Order No.		100-00-003	100-00-004



SHRINK FIT CHUCK

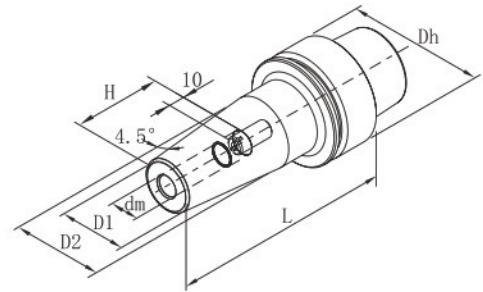
- Used for high speed spindles.
- For clamping cutting tools with cylindric shank tolerance h6
- High tool-gripping strength and machining accuracy
- With indicating line for shank depth of cutter.
- Coolant pipe and coolant pipe Wrench optional.

DIN
69893-5
Form E



h6

Standard
G2.5
25,000
RPM



Order No.	Model	Shank	Size(mm)						Screw
			Dh	dm	D1	D2	L	H	
113-02-201	HSK40E-SFX03-60	HSK-E40	40	3	10	-	60	-	-
113-02-202	HSK40E-SFX04-60	HSK-E40	40	4	10	-	60	-	-
113-02-203	HSK40E-SFX05-60	HSK-E40	40	5	10	-	60	-	-
113-02-204	HSK40E-SFX06-80	HSK-E40	40	6	21	27	80	36	S005014C
113-02-205	HSK40E-SF08-80	HSK-E40	40	8	21	27	80	36	S006014C
113-02-206	HSK40E-SF10-80	HSK-E40	40	10	24	32	80	42	S008014C
113-02-207	HSK40E-SF12-90	HSK-E40	40	12	24	32	90	47	S008014C
113-02-208	HSK40E-SF14-90	HSK-E40	40	14	27	34	90	47	S008014C
113-02-209	HSK40E-SF16-90	HSK-E40	40	16	27	34	90	50	S012014C

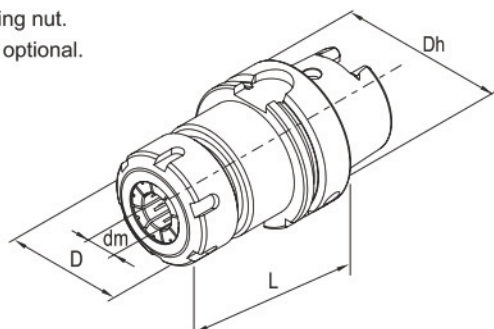
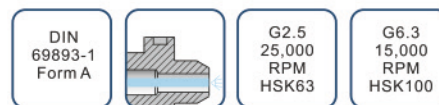
Optional accessories:

Coolant tubes	Dh=63	Dh=100
Model	TU-HSK63	TU-HSK100
Order No.	100-00-001	100-00-002

Coolant tube Wrench	Dh=63	Dh=100
Model	W-HSK63	W-HSK100
Order No.	100-00-003	100-00-004

ER COLLET CHUCK

- Radial run-out less than 0.01mm.
- Constructed of alloy steel for long, durable service life.
- For clamping tools with plain shank in collets to DIN6499.
- Supplied with high performance clamping nut.
- Coolant pipe and coolant pipe Wrench optional.



Order No.	Model	Shank	for Collets	Size(mm)				Nuts	Screw	Wrench
				Dh	dm	D	L			
111-04-401	HSK63A-ER11-75	HSK-A63	ER11	63	0.5-7	19	75	CN11HS	SER11C	W17D
111-04-402	HSK63A-ER16-80	HSK-A63	ER16	63	0.5-10	28	80	CN16HS	SER16C	W25D
111-04-403	HSK63A-ER16-100	HSK-A63	ER16	63	0.5-10	28	100	CN16HS	SER16C	W25D
111-04-404	HSK63A-ER16-120	HSK-A63	ER16	63	0.5-10	28	120	CN16HS	SER16C	W25D
111-04-405	HSK63A-ER20-80	HSK-A63	ER20	63	1.0-13	34	80	CN20HS	SER20C	W30D
111-04-406	HSK63A-ER20-100	HSK-A63	ER20	63	1.0-13	34	100	CN20HS	SER20C	W30D
111-04-407	HSK63A-ER20-120	HSK-A63	ER20	63	1.0-13	34	120	CN20HS	SER20C	W30D
111-04-408	HSK63A-ER25-80	HSK-A63	ER25	63	1.0-16	42	80	CN25B	S008014C	YER25B
111-04-409	HSK63A-ER25-100	HSK-A63	ER25	63	1.0-16	42	100	CN25B	SER25C	YER25B
111-04-410	HSK63A-ER25-120	HSK-A63	ER25	63	1.0-16	42	120	CN25B	SER25C	YER25B
111-04-411	HSK63A-ER32-80	HSK-A63	ER32	63	2.0-20	50	80	CN32B	S008014C	YER32B
111-04-412	HSK63A-ER32-100	HSK-A63	ER32	63	2.0-20	50	100	CN32B	SER32C	YER32B
111-04-413	HSK63A-ER32-120	HSK-A63	ER32	63	2.0-20	50	120	CN32B	SER32C	YER32B
111-04-414	HSK63A-ER40-80	HSK-A63	ER40	63	3.0-26	63	80	CN40B	-	YER40B
111-04-415	HSK63A-ER40-100	HSK-A63	ER40	63	3.0-26	63	100	CN40B	SER40C	YER40B
111-04-416	HSK63A-ER40-120	HSK-A63	ER40	63	3.0-26	63	120	CN40B	SER40C	YER40B
111-04-601	HSK100A-ER16-100	HSK-A100	ER16	100	0.5-10	28	100	CN16HS	SER16C	W25D
111-04-602	HSK100A-ER16-160	HSK-A100	ER16	100	0.5-10	28	160	CN16HS	SER16C	W25D
111-04-603	HSK100A-ER20-100	HSK-A100	ER20	100	1.0-13	34	100	CN20HS	SER20C	W30D
111-04-604	HSK100A-ER20-160	HSK-A100	ER20	100	1.0-13	34	160	CN20HS	SER20C	W30D
111-04-605	HSK100A-ER25-100	HSK-A100	ER25	100	1.0-16	42	100	CN25B	SER25C	YER25B
111-04-606	HSK100A-ER25-160	HSK-A100	ER25	100	1.0-16	42	160	CN25B	SER25C	YER25B
111-04-607	HSK100A-ER32-100	HSK-A100	ER32	100	2.0-20	50	100	CN32B	SER32C	YER32B
111-04-608	HSK100A-ER32-160	HSK-A100	ER40	100	3.0-26	63	160	CN32B	SER40C	YER40B
111-04-609	HSK100A-ER40-100	HSK-A100	ER40	100	3.0-26	63	100	CN40B	SER40C	YER40B
111-04-610	HSK100A-ER40-120	HSK-A100	ER40	100	3.0-26	63	120	CN40B	SER40C	YER40B
111-04-611	HSK100A-ER40-160	HSK-A100	ER40	100	3.0-26	63	160	CN40B	SER40C	YER40B



Optional accessories:

	Coolant tubes	Dh=63	Dh=100
Model		TU-HSK63	TU-HSK100
Order No.		100-00-001	100-00-002

	Coolant tube Wrench	Dh=63	Dh=100
Model		W-HSK63	W-HSK100
Order No.		100-00-003	100-00-004

ER COLLET CHUCK & COLLETS KIT SET

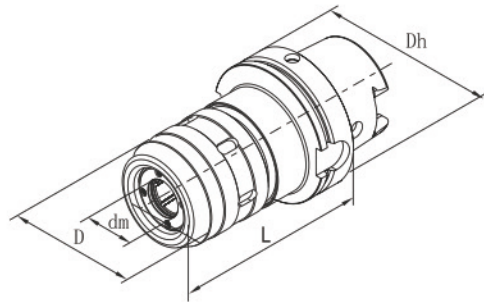
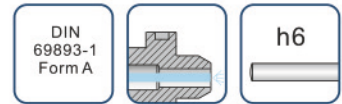
- Each set including 1pc of HSK63A ER collet chuck and 9pc of ER collets,
- Equipped with ER collet nut wrench and pack in strong aluminium box.
- Long working life time due to system radial run-out less than 0.01mm.

Order No.	Shank Model	Collet	Wrench
111-04-S41	HSK63A-ER16-100	ER16: dia.2-3-4-5-6-7-8-9-10mm	W25D
111-04-S42	HSK63A-ER25-100	ER25: dia.3-4-5-6-8-10-12-14-16mm	YER25B
111-04-S43	HSK63A-ER32-100	ER32: dia.4-6-8-10-12-14-16-18-20mm	YER32B



POWER MILLING CHUCK

- Very high clamping force and High stability improving surface quality and tool life time.
- Optimised design resulting in Ideal damping characteristics and low vibration.
- Radial run-out less than 0.01mm.
- For clamping cutting tools with cylindric shank tolerance h6
- Flexible clamping range by using reducing sleeve for various tool shank.
- Reducing sleeve ,Coolant pipe and coolant pipe wrench optional.



POWER MILLING CHUCK SET

Each set including 1pc each of HSK63A-C32-115 power milling chuck, C32-8,C32-10,C32-12,C32-16, C32-20,C32-25 (internal dia:8,10,12,16,20,25mm) reducing sleeve and wrench,pack in strong alu. box.



ORDER NO.111-03-S04

Order No.	Model	Shank	for Collets	Size(mm)			
				Dh	dm	D	L
111-03-401	HSK63A-C20-105	HSK-A63	C20	63	20	52	105
111-03-402	HSK63A-C25-110	HSK-A63	C25	63	25	62	110
111-03-403	HSK63A-C32-115	HSK-A63	C32	63	32	72	115
111-03-601	HSK100A-C20-110	HSK-A100	C20	100	20	52	110
111-03-602	HSK100A-C25-115	HSK-A100	C25	100	25	62	115
111-03-603	HSK100A-C32-120	HSK-A100	C32	100	32	72	120
111-03-604	HSK100A-C42-120	HSK-A100	C42	100	42	87	120

Optional accessories:

Coolant tubes	Dh=63		Dh=100	
	Model		Model	
	Order No.		Order No.	
	TU-HSK63	TU-HSK100		
	100-00-001	100-00-002		

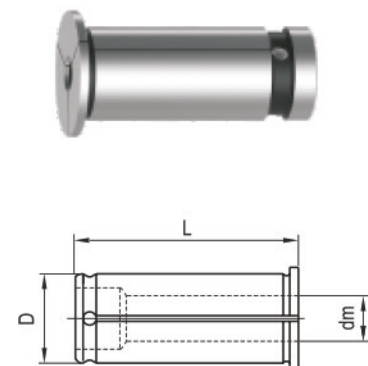
Coolant tube Wrench	Dh=63		Dh=100	
	Model		Model	
	Order No.		Order No.	
	W-HSK63	W-HSK100		
	100-00-003	100-00-004		

REDUCING SLEEVE FOR POWER MILLING CHUCK

- For drill,milling,reaming. • Radial run-out less than 0.01mm
- For clamping cutting tools with cylindric shank tolerance h6

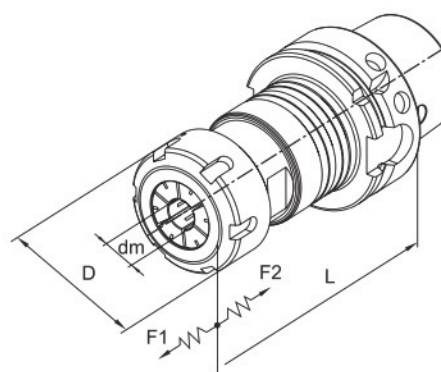
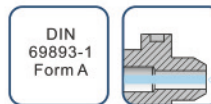


Order No.	Model	Size (mm)			Order No.	Model	Size (mm)		
		dm	D	L			dm	D	L
100-03-001	C20-3	3	20	55	100-03-020	C32-6	6	32	65
100-03-002	C20-4	4	20	55	100-03-021	C32-8	8	32	65
100-03-003	C20-5	5	20	55	100-03-022	C32-10	10	32	65
100-03-004	C20-6	6	20	55	100-03-023	C32-12	12	32	65
100-03-005	C20-8	8	20	55	100-03-024	C32-14	14	32	65
100-03-006	C20-10	10	20	55	100-03-025	C32-16	16	32	65
100-03-007	C20-12	12	20	55	100-03-026	C32-18	18	32	65
100-03-008	C20-14	14	20	55	100-03-027	C32-20	20	32	65
100-03-009	C20-16	16	20	55	100-03-028	C32-25	25	32	65
100-03-010	C25-4	4	25	60	100-03-029	C42-6	6	42	70
100-03-011	C25-5	5	25	60	100-03-030	C42-8	8	42	70
100-03-012	C25-6	6	25	60	100-03-031	C42-10	10	42	70
100-03-013	C25-8	8	25	60	100-03-032	C42-12	12	42	70
100-03-014	C25-10	10	25	60	100-03-033	C42-14	14	42	70
100-03-015	C25-12	12	25	60	100-03-034	C42-16	16	42	70
100-03-016	C25-14	14	25	60	100-03-035	C42-18	18	42	70
100-03-017	C25-16	16	25	60	100-03-036	C42-20	20	42	70
100-03-018	C25-18	18	25	60	100-03-037	C42-25	25	42	70
100-03-019	C25-20	20	25	60	100-03-038	C42-32	32	42	70



AUTOMATIC MICRO-COMPENSATION TAPPING CHUCK

- Compensation capacity $\pm 0.5\text{mm}$.
- Precision producing true thread with quality surface.
- Improving effectiveness and tap life time.
- For NC machines and machining center.
- For right hand and left hand thread.



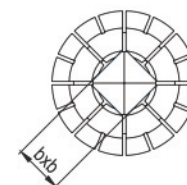
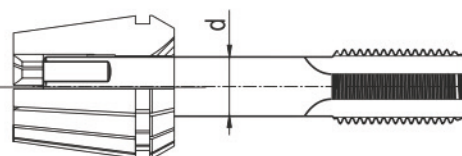
Order No.	Model	SHANK	capacity	Size(mm)					Nuts	for Collets
				D	dm	L	F1	F2		
111-13-401	HSK63A-V20-100	HSK-A63	M4-M12(No.8-7/16")	34	3-10	100	0.5	0.5	CN20HS	ER20
111-13-601	HSK100A-V20-110	HSK-A100	M4-M12(No.8-7/16")	34	3-10	110	0.5	0.5	CN20HS	ER20
111-13-402	HSK63A-V32-120	HSK-A63	M4-M20(No.8-3/4")	50	3-16	120	0.5	0.5	CN32B	ER32
111-13-602	HSK100A-V32-130	HSK-A100	M4-M20(No.8-3/4")	50	3-16	130	0.5	0.5	CN32B	ER32

Optional accessories:	V20	V32
oolant Nuts	CN20C	CN32C
Sealing Disk	DER20C	DER32C
Wrench for Nut	W30D	YER32B
Wrench for fixing	W24D	W36D

Optional accessories:	Dh=63	Dh=100
Coolant tubes	TU-HSK63	TU-HSK100
Coolant tube Wrench	W-HSK63	W-HSK100

ER TAP COLLET

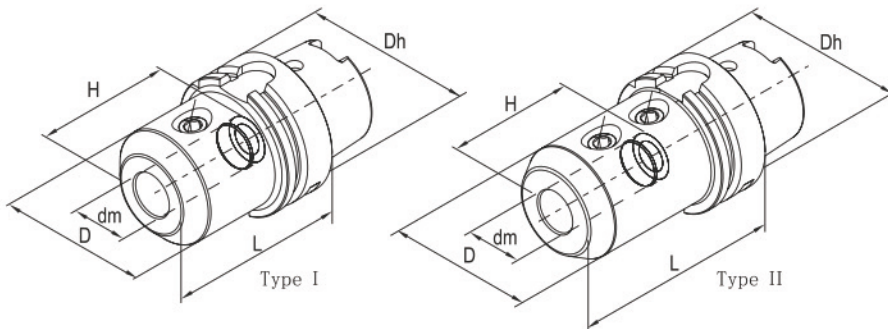
- Special design with internal square drive for machine taps.



Order No.	Modle	For taps				
		Shank d(mm)	Square b(mm)	ISO529/ISO2283	DIN374/DIN376	JISB4430
100-13-201	ER20-6.3B5	6.3	5	M8	M8	M6/M8
100-13-202	ER20-7B5.5	7	5.5	-	M10	M10
100-13-203	ER20-8B6.3	8	6.3	M10	-	-
100-13-204	ER20-8.5B6.5	8.5	6.5	-	-	M12
100-13-205	ER20-9B7.1	9	7.1	M12	M12	-
100-13-301	ER32-6.3B5	6.3	5	M8	M8	M6/M8
100-13-302	ER32-7B5.5	7	5.5	-	M10	M10
100-13-303	ER32-8B6.3	8	6.3	M10	-	-
100-13-304	ER32-8.5B6.5	8.5	6.5	-	-	M12
100-13-305	ER32-9B7.1	9	7.1	M12	M12	-
100-13-306	ER32-12B9	12	9	-	M16	-
100-13-307	ER32-12.5B10	12.5	10	M16	-	M16
100-13-308	ER32-14B11.2	14	11.2	M18/M20	M18	M18
100-13-309	ER32-15B12	15	12	-	-	M20
100-13-310	ER32-16B12	16	12	-	M20	-

SIDE LOCK HOLDER

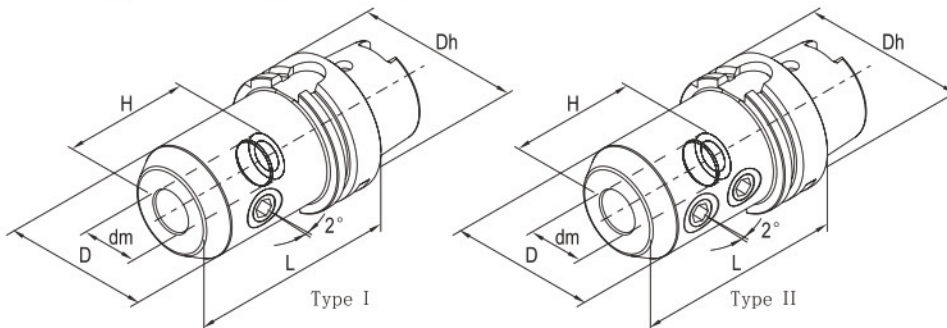
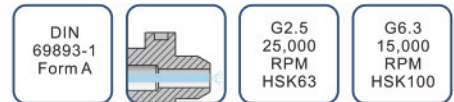
- For clamping tools with weldon shank to DIN1835 form B and DIN6535 form HB.
- Coolant pipe and coolant pipe Wrench optional.



Order No.	Model	Shank	Size(mm)					Screw type	Type
			Dh	dm	D	L	H		
111-05-401	HSK63A-XP16-80	HSK-A63	63	16	48	80	52	SXP16	I
111-05-402	HSK63A-XP20-80	HSK-A63	63	20	50	80	54	SXP20	I
111-05-403	HSK63A-XP25-110	HSK-A63	63	25	60	110	66	SXP25	II
111-05-404	HSK63A-XP32-110	HSK-A63	63	32	68	110	70	SXP32	II
111-05-601	HSK100A-XP16-100	HSK-A100	100	16	48	100	52	SXP16	I
111-05-602	HSK100A-XP20-100	HSK-A100	100	20	50	100	54	SXP20	I
111-05-603	HSK100A-XP25-100	HSK-A100	100	25	60	100	66	SXP25	II
111-05-604	HSK100A-XP32-100	HSK-A100	100	32	68	100	66	SXP32	II
111-05-605	HSK100A-XP40-120	HSK-A100	100	40	84	120	80	SXP32	II
111-05-606	HSK100A-XP40-160	HSK-A100	100	40	84	160	80	SXP32	II

2° SIDE LOCK HOLDER

- For clamping tools with parallel shank and inclined clamping flat(2°) DIN1835 form E and DIN6535 form HE.
- Coolant pipe and coolant pipe Wrench optional.



Order No.	Model	Shank	Size(mm)					Screw type	Screw type	Type
			Dh	dm	D	L	H			
111-05-405	HSK63A-XP16-100	HSK-A63	63	16	48	100	52	SXP16	S012014C	I
111-05-406	HSK63A-XP20-100	HSK-A63	63	20	52	100	54	SXP20	S020016C	I
111-05-407	HSK63A-XP25-110	HSK-A63	63	25	65	110	59	SXP25	S020016C	II
111-05-408	HSK63A-XP32-110	HSK-A63	63	32	72	110	63	SXP32	S020016C	II
111-05-607	HSK100A-XP16-100	HSK-A100	100	16	48	100	52	SXP16	S012014C	I
111-05-608	HSK100A-XP20-110	HSK-A100	100	20	52	110	54	SXP20	S020016C	I
111-05-609	HSK100A-XP25-120	HSK-A100	100	25	65	120	59	SXP25	S020016C	II
111-05-610	HSK100A-XP32-120	HSK-A100	100	32	72	120	63	SXP32	S020016C	II

Optional accessories:

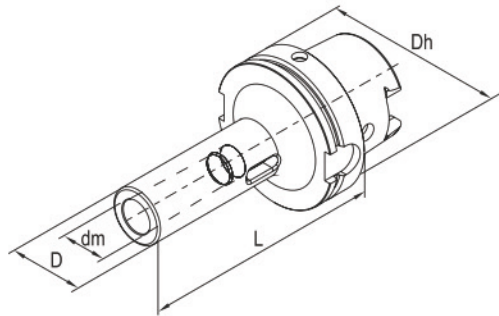
	Coolant tubes	Dh=63	Dh=100
Model		TU-HSK63	TU-HSK100
Order No.		100-00-001	100-00-002

	Coolant tube Wrench	Dh=63	Dh=100
Model		W-HSK63	W-HSK100
Order No.		100-00-003	100-00-004

MORSE TAPER HOLDER WITH TANG

- For clamping tools with MT taper shank with tang.

DIN 69893-1 Form A
Standard G6.3 8,000 RPM

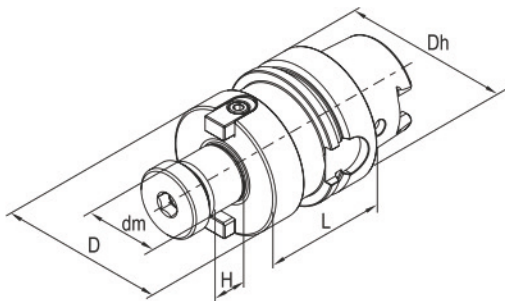


Order No.	Model	Shank	Morse taper	Capacity(φ mm)	Size(mm)			
					Dh	D	dm	L
111-06-401	HSK63A-M1-100	HSK-A63	MT1	3-14	63	25	12.065	100
111-06-402	HSK63A-M2-120	HSK-A63	MT2	14.25-23.0	63	32	17.780	120
111-06-403	HSK63A-M3-140	HSK-A63	MT3	23.25-31.75	63	40	23.825	140
111-06-404	HSK63A-M4-160	HSK-A63	MT4	32.0-50.5	63	48	31.267	160
111-06-601	HSK100A-M1-110	HSK-A100	MT1	3-14	100	25	12.065	110
111-06-602	HSK100A-M2-120	HSK-A100	MT2	14.25-23.0	100	32	17.780	120
111-06-603	HSK100A-M3-150	HSK-A100	MT3	23.25-31.75	100	40	23.825	150
111-06-604	HSK100A-M4-170	HSK-A100	MT4	32.0-50.5	100	48	31.267	170
111-06-605	HSK100A-M5-200	HSK-A100	MT5	51-76	100	63	44.399	200

SHELL END MILL ARBOR

- For clamping shell end mill and milling cutter.

DIN 69893-1 Form A
Standard G6.3 15,000 RPM



Order No.	Model	Shank	Size(mm)					Screw	Key	Screw
			Dh	dm	D	L	H			
111-07-401	HSK63A-XMB16-50	HSK-A63	63	16	34	50	17	MS08030	JC08017	MS03008
111-07-402	HSK63A-XMB16-100	HSK-A63	63	16	34	100	17	MS08030	JC08017	MS03008
111-07-403	HSK63A-XMB22-50	HSK-A63	63	22	42	50	19	MS10030	JC10021	MS04010
111-07-404	HSK63A-XMB22-100	HSK-A63	63	22	42	100	19	MS10030	JC10021	MS04010
111-07-405	HSK63A-XMB27-60	HSK-A63	63	27	60	60	21	SXM27	JC12023	MS05016
111-07-406	HSK63A-XMB27-100	HSK-A63	63	27	60	100	21	SXM27	JC12023	MS05016
111-07-407	HSK63A-XMB32-60	HSK-A63	63	32	78	60	24	SXM32	JC14020	MS06020
111-07-408	HSK63A-XMB32-100	HSK-A63	63	32	78	100	24	SXM32	JC14020	MS06020
111-07-409	HSK63A-XMB40-60	HSK-A63	63	40	89	60	27	SXM40	JC16030	MS08020
111-07-601	HSK100A-XMB22-50	HSK-A100	100	22	42	50	19	MS10030	JC10021	MS04010
111-07-602	HSK100A-XMB22-100	HSK-A100	100	22	42	100	19	MS10030	JC10021	MS04010
111-07-603	HSK100A-XMB27-50	HSK-A100	100	27	60	50	21	SXM27	JC12023	MS05016
111-07-604	HSK100A-XMB27-100	HSK-A100	100	27	60	100	21	SXM27	JC12023	MS05016
111-07-605	HSK100A-XMB32-50	HSK-A100	100	32	78	50	24	SXM32	JC14020	MS06020
111-07-606	HSK100A-XMB32-100	HSK-A100	100	32	78	100	24	SXM32	JC14020	MS06020
111-07-607	HSK100A-XMB40-60	HSK-A100	100	40	89	60	27	SXM40	KXM40	MS08020
111-07-608	HSK100A-XMB40-100	HSK-A100	100	40	89	100	27	SXM40	KXM40	MS08020